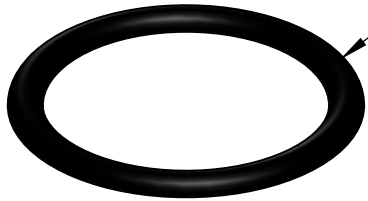
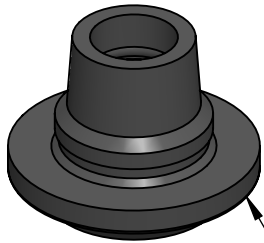


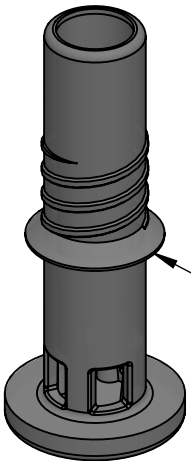
CUP



GASKET



SEAL



STEM

[3.34±0.17]
.1315±.0065

[8.98±0.17]
.3535±.0065

A

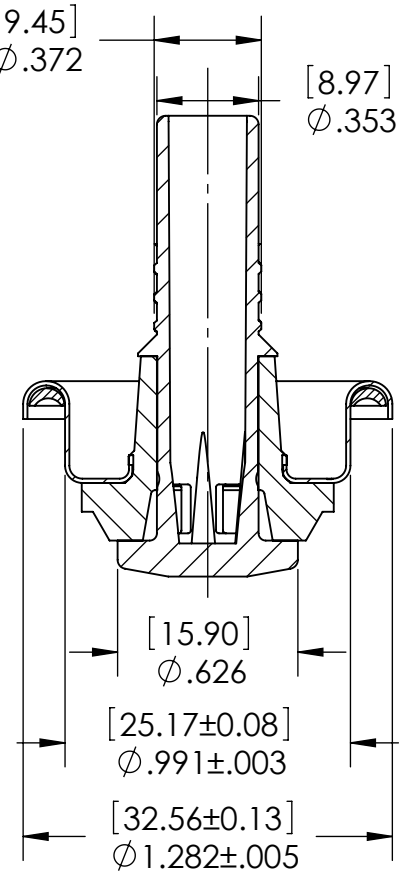
A

40° MODIFIED ACME THREAD
[5.08] .200 DOUBLE LEAD
[2.54] .100 PITCH

[40.64±0.50]
1.600±.020

[9.45]
Ø.372

[8.97]
Ø.353



SECTION A-A

PROPRIETARY AND CONFIDENTIAL
THE INFORMATION CONTAINED IN THIS
DRAWING IS THE SOLE PROPERTY OF
CLAYTON CORPORATION. ANY
REPRODUCTION IN PART OR AS A WHOLE
WITHOUT THE WRITTEN PERMISSION OF
CLAYTON CORPORATION IS PROHIBITED.



866 HORAN DR.,
FENTON, MO 63026
636-349-5333

| | | | | | | |
|-------------|--|---|---------|-----------|------------|--------------|
| DRAWN BY: | | NAME | DATE | TITLE: | 650 Valve | |
| CHECKED BY: | | | 3/17/09 | SIZE | PART # | REV F |
| Tolerances: | | DECIMAL INCHES: 0.0 +/- .015" 0.00 +/- .010" 0.000 +/- .005" ANGULAR: +/- .10 DEG. | | A | 1001000650 | |
| | | | | MATERIAL: | SCALE: 3:2 | SHEET 1 OF 2 |



866 Horan Drive
 Fenton, MO 63026 USA
 1-800-729-8220
 1-636-349-5333
 www.claytoncorp.com

SPECIFICATION SHEET 650 VALVE

Valve Part Number: 1001000650

Valve Information:

| Parameter | Information |
|------------|----------------------------------|
| Food Grade | No |
| Weight† | English: 0.29 oz.; Metric: 8.1 g |

Valve Component Information:

| Component | Appearance | Material | Other Information |
|------------------|----------------|----------------|---|
| Mounting Cup | Silver | Tin Free Steel | Top Coating: PET Coating Bottom Coating: PET Coating |
| Stem | Natural- Clear | Olefin Polymer | Orifices: English: 4 x 0.150 in. Metric: 4 x 3.81mm |
| Seal | Black | TPE | |
| Lathe Cut Gasket | Black | Nitrile | |
| Nozzle | N/A | N/A | |

Recommended Crimp Specification (Customer may need to adjust for their specific container):

| Measurement | English | Metric |
|-------------|-----------------------|-------------------|
| Diameter | 1.050 in. — 1.060 in. | 26.67mm — 26.92mm |
| Depth | 0.200 in. — 0.210 in. | 5.08mm — 5.33mm |

Gassing Information:

| Parameter | English | Metric |
|--|-----------------------|-----------------|
| Valve opening distance if gassing through valve: | 0.039 in. — 0.059 in. | 1.00mm — 1.50mm |

Carton Information:

| Item | English | Metric |
|----------|-----------------------------------|-----------------------------------|
| Quantity | 2,000 | 2,000 |
| Size | L: 19 in. x W: 12 in. x H: 14 in. | L: 48.3cm x W: 30.5cm x H: 35.6cm |
| Weight† | 38.5 lbs. | 17.5 kg |

Pallet Information:

| Item | USA | International |
|----------|--|--------------------------------------|
| Style | USA | USA |
| Quantity | 64,000 / 80,000 | 48,000 |
| Size | L: 40 in. x W: 48 in. x H: 62 in. / 76 in. | L: 101.6cm x W: 121.9cm x H: 121.9cm |
| Weight† | 1,272 lbs. / 1,580 lbs. | 439 kg |

Valve Warehouse Storage Information:

| Condition | English | Metric |
|-------------|--------------------|--------------------|
| Location | Dry Protected Area | Dry Protected Area |
| Temperature | 40°F — 100°F | 4.4°C — 37.8°C |
| Time | Up to 5 years | Up to 5 years |

† Weights are approximates

Approved By: Brennan Fogarty

Date: 11/20/2023