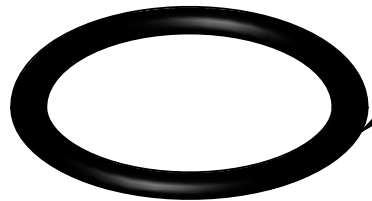
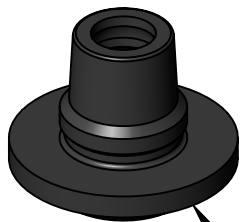


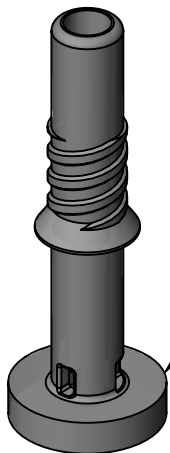
CUP



GASKET



SEAL



STEM

[3.18±0.33]
.125±.013

[8.38±0.25]
.330±.010

A

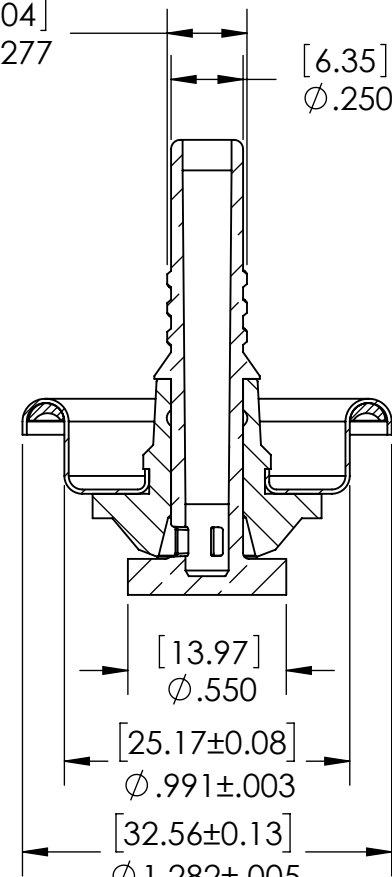
A

[40.13±0.51]
1.580±.020

40° MODIFIED ACME THREAD
[5.08].200 DOUBLE LEAD
[2.54].100 PITCH

[7.04]
Ø.277

[6.35]
Ø.250



SECTION A-A

PROPRIETARY AND CONFIDENTIAL

THE INFORMATION CONTAINED IN THIS DRAWING IS THE SOLE PROPERTY OF CLAYTON CORPORATION. ANY REPRODUCTION IN PART OR AS A WHOLE WITHOUT THE WRITTEN PERMISSION OF CLAYTON CORPORATION IS PROHIBITED.



866 HORAN DR.,
FENTON, MO 63026
636-349-5333

	NAME	DATE
DRAWN BY:	DGS	3/4/09
CHECKED BY:		3/18/09
Tolerances:		
DECIMAL INCHES: 0.0 +/- .015"		
0.00 +/- .010"		
0.000 +/- .005"		
ANGULAR: +/- .10 DEG.		

TITLE:		556 Valve	
SIZE	PART #	REV C	
A	1001000556		
MATERIAL:	SCALE: 3:2	SHEET 1 OF 2	



866 Horan Drive
 Fenton, MO 63026 USA
 1-800-729-8220
 1-636-349-5333
 www.claytoncorp.com

SPECIFICATION SHEET 556 VALVE

Valve Part Number: 1001000556

Valve Information:

Parameter	Information
Food Grade	No
Weight†	English: 0.27 oz.; Metric: 7.8 g

Valve Component Information:

Component	Appearance	Material	Other Information
Mounting Cup	Silver	Tin Free Steel	Top Coating: PET Coating Bottom Coating: PET Coating
Stem	Natural- Clear	Olefin Polymer	Orifices: English: 3 x 0.080 in. Metric: 3 x 2.03mm
Seal	Black	Nitrile	
Lathe Cut Gasket	Black	Nitrile	

Recommended Crimp Specification (Customer may need to adjust for their specific container):

Measurement	English	Metric
Diameter	1.050 in. — 1.060 in.	26.67mm — 26.92mm
Depth	0.200 in. — 0.210 in.	5.08mm — 5.33mm

Gassing Information:

Parameter	English	Metric
Valve opening distance if gassing through valve:	0.039 in. — 0.059 in.	1.00mm — 1.50mm

Carton Information:

Item	English	Metric
Quantity	2,500	2,500
Size	L: 19 in. x W: 12 in. x H: 14 in.	L: 48.3cm x W: 30.5cm x H: 35.6cm
Weight†	46.2 lbs.	21.0 kg

Pallet Information:

Item	USA	International
Style	USA	USA
Quantity	80,000 / 100,000	60,000
Size	L: 40 in. x W: 48 in. x H: 62 in. / 76 in.	L: 101.6cm x W: 121.9cm x H: 121.9cm
Weight†	1,519 lbs. / 1,888 lbs.	523 kg

Valve Warehouse Storage Information:

Condition	English	Metric
Location	Dry Protected Area	Dry Protected Area
Temperature	40°F — 100°F	4.4°C — 37.8°C
Time	Up to 5 years	Up to 5 years

† Weights are approximates

Approved By: Brennan Fogarty

Date: 10/5/2021