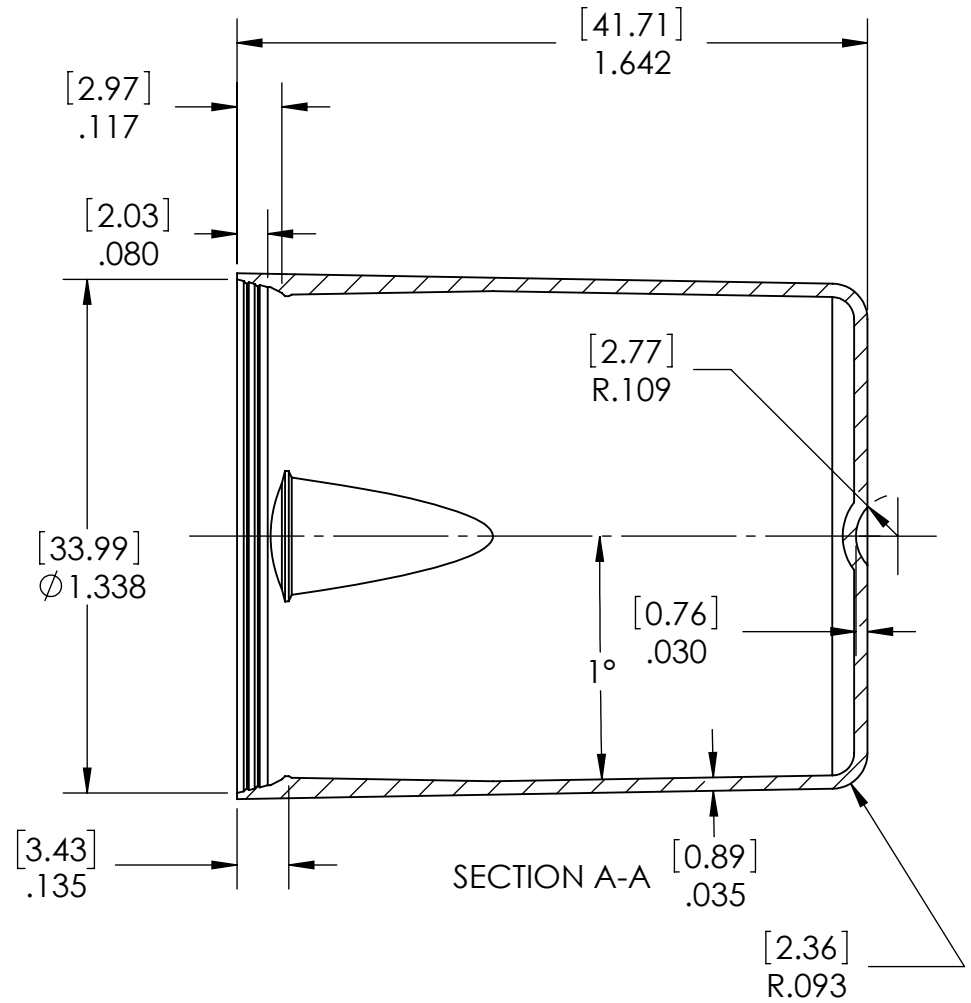
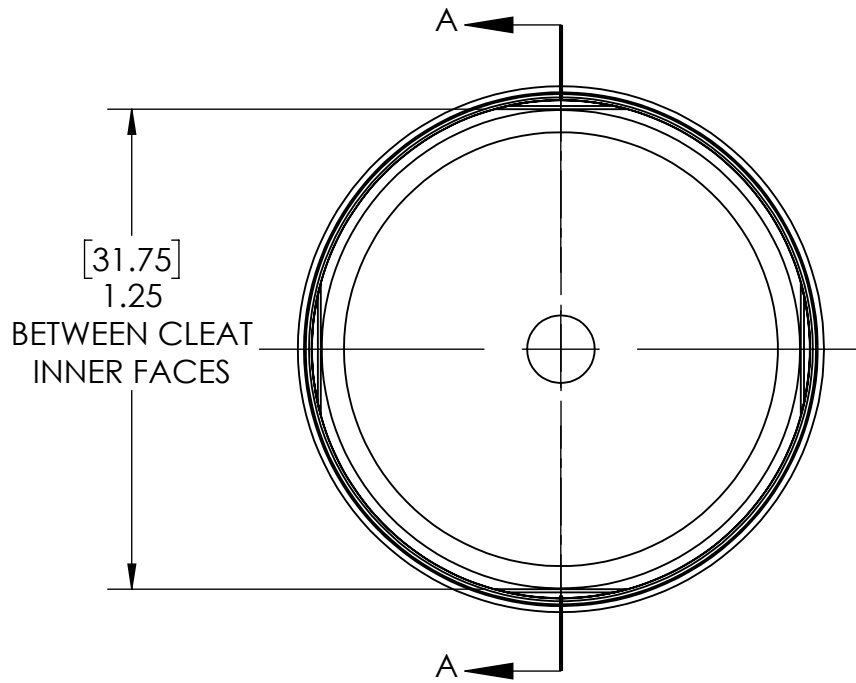


COLOR	PART NO.
CLEAR	3001290152
WHITE	3001290154
RED	3001290155
BLACK	3001290157
WHITE (STIFF)	3001290158



PROPRIETARY AND CONFIDENTIAL
THE INFORMATION CONTAINED IN THIS DRAWING IS THE SOLE PROPERTY OF CLAYTON CORPORATION. ANY REPRODUCTION IN PART OR AS A WHOLE WITHOUT THE WRITTEN PERMISSION OF CLAYTON CORPORATION IS PROHIBITED.



866 HORAN DR.,
FENTON, MO 63026
636-349-5333

DRAWN BY: DGS		DATE: 2/19/09	TITLE: SW 158 Cover	
CHECKED BY:		7/14/10	SIZE: A	REV H
Tolerances:		DECIMAL INCHES: 0.0 +/- .015" 0.00 +/- .010" 0.000 +/- .005"	PART #: 300129015X	SHEET 1 OF 2
ANGULAR: +/- .10 DEG.		MATERIAL: Olefin Polymer	SCALE: 2:1	



866 Horan Drive
Fenton, MO 63026 USA
1-800-729-8220
1-636-349-5333
www.claytoncorp.com

SPECIFICATION SHEET SW 158 Cover

Cover Part Number: 300129015X

Cover Information:

Parameter	Information
Food Grade	Yes
Weight†	English: 0.13 oz.; Metric: 3.6 g
Material	Olefin Polymer
Appearance	Variable

Carton Information:

Item	English	Metric
Quantity	1,800	1,800
Size	L: 23 in. x W: 15 in. x H: 18 in.	L: 58.4cm x W: 38.1cm x H: 45.7cm
Weight†	16.8 lbs.	7.6 kg

Pallet Information:

Item	USA	International
Style	USA	USA
Quantity	36,000	18,000
Size	L: 40 in. x W: 48 in. x H: 78 in.	L: 101.6cm x W: 121.9cm x H: 106.7cm
Weight†	376 lbs.	94 kg

Warehouse Storage Information:

Condition	English	Metric
Location	Dry Protected Area	Dry Protected Area
Temperature	40°F — 100°F	4.4°C — 37.8°C
Time	Up to 5 years	Up to 5 years

† Weights are approximates

Approved By: _____

Date: 09/14/2023